

锐意进取 志在必得  
Forging ahead and determined to win



北京锐志天宏科技有限公司  
Beijing RichAuto S&T Co., Ltd.

北京锐志天宏科技有限公司  
Beijing RichAuto S&T Co., Ltd.

地址: 北京市海淀区上地三街嘉华大厦A座308室  
邮编: 100085

电话: 86-10-62970368/82923063

传真: 86-10-82920078

网址: [www.richnc.com.cn](http://www.richnc.com.cn)  
[www.richauto.com.cn](http://www.richauto.com.cn)

Add: A308 jiahua building, 9 Shangdi 3rd Street, Haidian District, Beijing, China.

Postal code: 100085

Tel: 86-10-62970368/82923063

Fax: 86-10-82920078

Website: [www.richnc.com.cn](http://www.richnc.com.cn)  
[www.richauto.com.cn](http://www.richauto.com.cn)

济南办事处: 济南市天桥区泉星小区六号楼三单元402

电话: 0531-85921219

无锡办事处: 无锡市锡山区东亭街道华亭苑21号2602室

电话: 0510-88213176

广州办事处: 广州市番禺区市桥街光明北路233号  
绿茵庭园B幢2梯802

Jinan Office: 3-402 Quanxing Community, Tianqiao District, Jinan

Tel: 86-531-85921219

Wuxi Office: 21-2602 Huatingyuan Community, Xishan District, Wuxi

Tel: 86-510-88213176

Guangzhou Office: B-2-802 Lvyintingyuan Community, Panyu District, Guangzhou

## C 公司简介 Company Brief

我公司自2003年成立以来，依托源于清华的科技研发力量，成功的在数控领域推出拥有完全知识产权的RichAuto数控系列产品，并经过数年在机械雕刻、模具制作、激光和等离子切割等领域广泛的应用成果证实，独特的硬件结构结合独有的运动算法使得RichAuto产品实现了高速度、高精度、高灵敏度的运动体系。

多种数据高速传输方式使得以往低效的数据传输变得方便、快捷。

以优质的产品和服务一跃成为业内知名的数控系统企业，并且集研发、设计、测试、生产、销售、服务于一体，根据行业进步不断开发和研制新的产品，始终以提升运动控制技术为目标，携手同行，共同促进数控行业发展，并为客户提供完善的服务和量身定制系统解决方案。我们坚信：“锐意进取，志在必得”。

Since Beijing RichAuto S&T Co.,Ltd established in 2003,owing to strong scientific and research power derived from Tsinghua University,we have lauched different series of RichAuto products with full intellectual property.

After years' application into wider areas (e.g. machine engraving, die & mould processing, laser and plasma cutting), RichAuto products, due to the combination of the unique hardware configuration and motion algorithm, are proven to promote a motion system characterized by fast speed, high accuracy and high sensibility. Besides, high-speed transmission modes make it easier and faster in transmitting data.

Excellent products and service helped Beijing RichAuto S&T Co. Ltd rank among the well-known business enterprises in numerical control industry. As a company integrating R&D, design, testing, production, sales, and service, we also develop products of specific functions against the customers' unique requirements.

Forging ahead and determined to win! We will constantly research and develop new products, so as to keep pace with the times and provide better service for our customers!



## 资质证书 Qualification Certificate



## 目录 CONTENTS

|   |    |
|---|----|
| 》 AutoNow A5X彩屏运动控制系统                                 | 01 |
| AutoNow A5X Color Screen Motion Control System        |    |
| 完美的PC操作控制模式   | 03 |
| Perfect PC Operating Control Mode                     |    |
| A58四轴四联动运动控制系统  | 05 |
| Four-axis Linkage Motion Control System-A58           |    |
| A512激光运动控制系统  | 06 |
| Laser Motion Control System- A512                     |    |
| A55多刀头运动控制系统  | 07 |
| Multi-spindle Motion Control System-A55               |    |
| A57直排平面换刀运动控制系统                                       | 08 |
| ATC Motion Control System-A57                         |    |
| 圆盘换刀运动控制系统  | 09 |
| ATC Disc Motion Control System-A523                   |    |
| 》 A3X彩屏激光运动控制系统                                       | 10 |
| A3X Laser Motion Control System-A320                  |    |
| 》 A8X一体机数控系统  | 11 |
| A8X Integrated Control System                         |    |
| 》 AutoNow A1X运动控制系统                                   | 13 |
| AutoNow A1X Motion Control System                     |    |
| A11三轴运动控制系统   | 15 |
| Three -axis Linkage Motion Control System-A11         |    |
| A12等离子切割运动控制系统  | 16 |
| Plasma Cutting Motion Control System-A12              |    |
| A15多刀头运动控制系统  | 17 |
| Multi-spindle Motion Control System- A15              |    |
| A18四轴四联动运动控制系统  | 18 |
| Four-axis Linkage Motion Control System-A18           |    |
| A19双刀头车床运动控制系统  | 19 |
| Two-spindle Lathe Motion Control System -A19          |    |
| 》 产品外观及安装尺寸图  | 20 |
| Product Appearance And Installation Dimension Drawing |    |

## 高性能核心处理器

## High-performance core processor

采用 16 核处理 CPU，运算速度更快，处理能力更强。  
16-core processing CPU, faster computing speed, stronger data processing capacity.

## 5 寸彩屏显示，完美仿真加工文件

## 5 inches color display, support file simulation function

完美仿真各种格式的加工文件，加工中用户可以在屏幕查看到加工范围、当前加工位置、加工速度等信息；加工异常时，屏幕也会提示相应故障信息，方便用户进行排查并解除故障，保证加工的准确性。

Perfect processing files of various formats simulation, users can view the machining range, the current processing position, processing speed and other information on the screen during processing; when failures encountered, the screen will prompt corresponding fault information so users can check and resolve the fault to ensure the accuracy of processing.

## 完美的 PC 操作控制模式

## Perfect PC operating control mode

支持电脑操作模式，用户通过上位机软件实现 PC 机控制机床，不再依赖手柄操作；通过网络传输实现上位机和机床通信，对 PC 机硬件没有特殊要求，市面普通的机器即可；一台 PC 机可以控制 1 台或多台机器，大大节省用户成本；兼容手持操作模式，用户可以在 PC 操作和手持操作模式中按需要进行切换。

Support computer operating mode, users use upper software instead of operating handle to achieve controlling machine; Host computer and machine communications transmitted over the network, and there are no special hardware requirements, a ordinary computer is OK; One computer can control one or more machines, which will reduce the cost. Handheld operating mode is compatible, users can choose different mode according to their actual requests .

## 简单的手持式按键操作

## Simple handheld key operation

20 个按键操作模式，易学易用，简单快捷。  
20-key operation mode , easy to use, simple and quick.

## 外壳采用专业定制设计

## A new and specialized shell design

全新外壳设计，同时做了专业的密闭性和缓冲处理，具备良好的防震、防尘、防水、防电磁干扰能力；外壳颜色包括灰色、蓝色、橘黄色，用户可以根据喜好选择不同颜色的外壳。

New shell design, which owns a specialized disposal about leakproofness and buffering, and it is shockproof, dustproof, waterproof, also the capability of anti-electromagnetic interference is good; shell colors including gray, blue, orange, users can choose different colors according to their preferences.

## 19 针带静电磁环 HDMI 数据传输线缆

## 19-pin HDMI cable with static magnetic ring

标准配备 2.5 米数据线，选配 6 米数据线；线质地柔软，易于拖拽；静电磁环可以有效防止各类电磁干扰，保证数据传输准确。

Standard with 2.5 meters cable, 6 meters data cable is optional, the wire of transmission cable is soft, easy to drag and drop; static magnetic ring can effectively prevent the various types of electromagnetic interference to ensure data transmission accurate.



## 支持模拟量及高速 PWM 数字量输出控制

## Support analog and PWM quantity output

支持 0-10V 主轴模拟量输出控制，用户可根据实际需要选择模拟量输出或者多步段速输出控制主轴转速；支持高速 PWM 数字输出控制，主要用于激光切割机以及激光雕刻机领域。

Support 0-10V analog quantity output, users can select the analog output or multi-step speed according to the actual needs; support high-speed PWM digital quantity output, which mainly used for laser cutting machine and laser engraving machine.

## 支持多种加工文件格式，可定制特殊格式

## Support many file fomats and special format can be customized

支持各类标准的 G 代码文本文件、PLT、DXF、BMP 位图，同时可以定制特殊的文件加工格式，方便厂商和用户对自己的加工文件进行加密，保证文件的专用性。

Support a variety of standard G code text file, PLT, DXF, BMP bitmap, file can be customized to the special processing format to ensure manufacturers and users have exclusive files.

## 智能记忆功能

## Intelligent memory function

支持掉电恢复以及断点加工功能，智能记忆加工文件名称以及文件存储位置，方便用户准确、快捷的恢复加工。

Intelligent processing memory function, owns more functions of power off restoration, continuation on break point, working time anticipation, etc.

## 更强的后续开发性

## Stonger secondary development function

A5X 系列产品二次开发性更强，如特殊功能增加、界面定义、菜单定义、更换不同尺寸显示屏等。

This series of products have stonger secondary development function, such as adding special fuction, interface definition, menu definition, switch to a different screen size and other functions.

## 超强的系统加密保护功能

## Powerful system encryption

A5X 系列产品具有更全面的加密保护功能，诸如硬件加密、参数设置加密、内部重要加工文件加密等，有效防止被修改、删除以及抄袭，最大限度的保证客户技术信息和资产安全。

This series of products have a more comprehensive encryption protection function, such as hardware encryption, parameter setting encryption and internal processing files encryption, which effectively prevent to be modified, deleted and copied, to ensure technical information and asset secure.

## 产品型号分类表 Product Category List

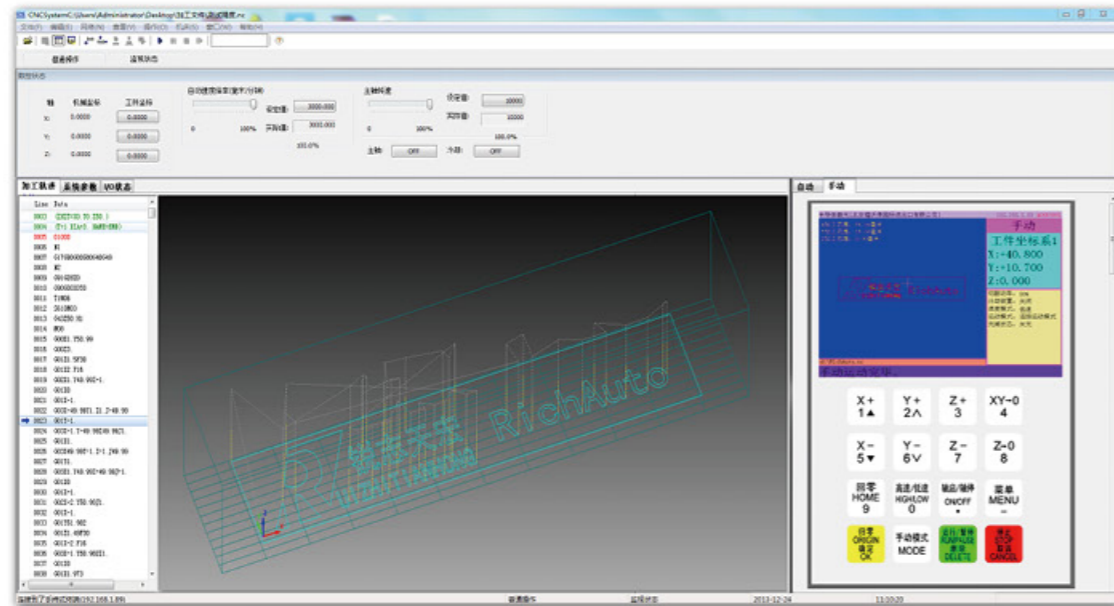
| 产品分类<br>Product Category                                    | 型号<br>Model |
|---|-------------|
| 三轴运动控制系统<br>Three-axis Linkage Motion Control System        | A51         |
| 激光运动控制系统<br>Laser Motion Control System                     | A512        |
| 多刀头运动控制系统<br>Multi-spindle Motion Control System            | A55         |
| 直排平面换刀运动控制系统<br>ATC Motion Control System                   | A57         |
| 四轴运动控制系统<br>Four-axis Linkage Motion Control System         | A58         |
| 圆盘换刀运动控制系统<br>Rotary-type Tool Change Motion Control System | A523        |

完美的 PC 操作控制模式 Perfect PC operating control mode

手持控制器网络远程控制状态 Network remote control status



控制软件界面 Software interface



功能及特点 Functions and features

- ◆ 网络传输控制
- ◆ 对 PC 机硬件配置没有任何特殊要求，笔记型和台式机及工控机均可
- ◆ 一台 PC 机可控制多台机器设备
- ◆ 三维模拟显示功能，直观准确地显示加工效果
- ◆ 兼容手持控制器操作模式
- Network Control Mode
- No special hardware requirements, notebook computers or desktop computers and industrial personal computers are ok
- One computer can control one or more machines
- Three-dimensional simulation function, display processing results accurately and intuitively
- Handheld operating mode is compatible

完美的 PC 操作控制模式 Perfect PC operating control mode

控制软件界面 Software interface



功能及特点 Functions and features

- ◆ 支持厂商参数加密功能
- ◆ 支持 I/O 端口状态查看功能
- ◆ 支持多种报警及操作提示
- ◆ 支持加工日志功能
- ◆ 支持 UG、JDpaint、ArtCAM、AUTOCAD、CorelDraw 等多种 CAD/CAM 软件生成的 G 代码以及 DXF、PLT 等文件格式
- ◆ 支持特殊定制格式的读取
- ◆ 高速加工仿真功能
- ◆ 支持多种键盘快捷操作
- ◆ 支持端口功能修改记录保存功能
- Support parameters encryption function
- Support checking I/O ports status function
- Support multiple alarms and operating prompt
- Support checking processing log function
- Support UG, JDpaint, ArtCAM, AutoCAD, CorelDraw and other CAD / CAM software to generate G-code and DXF, PLT and other file formats
- Support reading special file format
- Fast simulation speed
- Support a variety of keyboard shortcuts operation
- Support recording the port functional changes function

适用产品型号 Applicable Model

| 产品分类<br>Product Category   | 型号<br>Model |
|--|-------------|
| A5X 系列彩屏运动控制系统<br>AutoNow A5X Color Screen Motion Control System | A5X         |
| A3X 系列彩屏运动控制系统<br>AutoNow A3X Color Screen Motion Control System | A3X         |

## A58 四轴四联动运动控制系统 Four-axis Linkage Motion Control System-A58

## A512 激光运动控制系统 A512 Laser Motion Control System-A512

### 产品特点 Product Features



- ◆ 采用位置控制方式，差分控制信号，支持四轴联动控制
- ◆ 5 寸彩屏显示，完美仿真加工文件
- ◆ 支持 A/C 旋转代码格式以及特殊 M 代码控制
- ◆ 标准配备 16 入 16 出接口板，选配 32 入 32 出接口板，I/O 口可自定义编辑
- ◆ 完善的 PC 机控制模式，一台 PC 机可以控制多台机器
- ◆ 抗干扰性强，通过多项 CE 测试
- ◆ 智能加工记忆功能，支持掉电恢复以及断点加工功能
- ◆ 完善的加密功能
- ◆ 可实现圆柱、棱柱、多面体等复杂工件加工
- ◆ 广泛应用在佛像、楼梯柱、欧式家具、桌腿等加工设备控制上

- Adopting position control & differential signal mode, support four-axis linkage motion control
- 5 inches color display, perfect processing file simulation
- Support A/C rotating code format and special M code control
- Standard 16 input&output ports interface board, 32 input&output ports interface board is optional, I/O ports can be customized to edit
- Support computer operating mode, one computer can control one or more machines, which will reduce the cost.
- Defend interference more powerfully and pass a number of CE tests
- Intelligent processing memory function, owns more functions of power off restoration, continuation on break point, working time anticipation, etc.
- Powerful system encryption
- Cylindrical, prismatic, polyhedral and other complex workpieces can be processed
- Widely used in the control of the Buddha, stair column, European furniture, table legs and other processing equipments

### 应用领域 Application Field



### 产品参数 Product Parameters

| 产品编号<br>Product Model          | RichAuto-A58   |  |   |
|--------------------------------|--|--|---|
| 处理器<br>CPU                     | DSP  | 掉电保护功能<br>Power Failure Protection       | 支持<br>Support                           |
| 内置存储器<br>Built-in Memory       | 1GB  | 断点加工功能<br>Breakpoint Processing Function | 无限<br>Unlimited                         |
| 显示屏<br>Display Screen          | 5 寸彩屏<br>5" Color Screen   | 供电电压<br>Power Supply                     | 9-36V DC                                |
| 通讯端口<br>Communication Port     | U 盘、网络<br>U Disk, Network  | 运动模式<br>Motion Mode                      | 连续、点动、距离<br>Continuous, Point, Distance |
| 联动轴数<br>Number of Linkage Axes | 4 轴<br>4 Axes  | 插补方式<br>Interpolation Method             | 直线、圆弧、样条曲线<br>Line, Arc, Spline         |
| 控制信号<br>Control Signal         | 差分信号<br>Differential Signal  | 软 / 硬限位<br>Soft / Hard Limit             | 支持<br>Support                           |
| 驱动系统<br>Drive System           | 步进 / 伺服电机<br>Stepping / Servo Motor  | 最大脉冲频率<br>Maximum Pulse Frequency        | 10MHz                                   |
| 最小输入单位<br>Minimum Input Unit   | 0.001mm  | 密码保护<br>Password Protection              | 支持<br>Support                           |
| 语言种类<br>Language               | 简 / 繁体中文、英文、其他语言可定制<br>Simplified/Traditional Chinese, English, Other Languages Can Be Customized                                      |  |   |
| 标准配置<br>Standard Configuration | 手持控制器: 1 个, 19 针 HDMI 数据线: 1 条, 16 I/O 接口板: 1 块, 说明书: 1 本<br>DSP Handle: 1, 19-pin HDMI Cable: 1, 16 I/O Interface Board: 1, Manual: 1 |  |   |

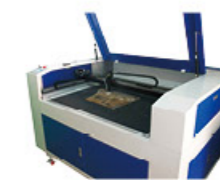
### 产品特点 Product Features



- ◆ 采用位置控制方式，差分控制信号，支持高速四轴控制
- ◆ 5 寸彩屏显示，完美仿真加工文件
- ◆ 支持 AI、PLT、DXF 等图形图像数据格式
- ◆ 支持标准 G 代码文本数据格式
- ◆ 支持 BMP 位图直接加工 无需经过任何软件导出
- ◆ 支持自动吹气、自动对焦、脚踏开关、安全保护等功能
- ◆ 支持分层输出，对每层可以单独定义激光功率、加工速度、工作方式（雕刻、切割等），并对每层的定义参数自动保存
- ◆ 标准配备 16 入 16 出接口板，选配 32 入 32 出接口板，I/O 口可自定义编辑
- ◆ 完善的 PC 机控制模式，一台 PC 机可以控制多台机器
- ◆ 抗干扰性强，通过多项 CE 测试

- Adopting position control & differential signal mode, support high-speed four-axis control
- 5 inches color display, support file simulation function
- Support AI, PLT, DXF and other graphics or image data formats
- Support standard G code data format
- Load the BMP bitmap file directly, do not need to export other format from laser control software
- Support automatic inflatable, automatic focus, the foot switch, safe protection and other functions
- Support hierarchical output, individually define laser power, processing speed, working methods for each layer (engraving, cutting, etc.), and automatically save the definitions of each layer
- Standard 16 input&output ports interface board, 32 input&output ports interface board is optional, I/O ports can be customized to edit
- Support computer operating mode, one computer can control one or more machines, which will reduce the cost.
- Defend interference more powerfully and pass a number of CE tests

### 应用领域 Application Field



### 产品参数 Product Parameters

| 产品编号<br>Product Model          | RichAuto-A58  |  |   |
|--------------------------------|---|--|---|
| 处理器<br>CPU                     | DSP   | 掉电保护功能<br>Power Failure Protection       | 支持<br>Support                           |
| 内置存储器<br>Built-in Memory       | 1GB   | 断点加工功能<br>Breakpoint Processing Function | 无限<br>Unlimited                         |
| 显示屏<br>Display Screen          | 5 寸彩屏<br>5" Color Screen  | 供电电压<br>Power Supply                     | 9-36V DC                                |
| 通讯端口<br>Communication Port     | U 盘、网络<br>U Disk, Network   | 运动模式<br>Motion Mode                      | 连续、点动、距离<br>Continuous, Point, Distance |
| 联动轴数<br>Number of Linkage Axes | 4 轴<br>4 Axes   | 插补方式<br>Interpolation Method             | 直线、圆弧、样条曲线<br>Line, Arc, Spline         |
| 控制信号<br>Control Signal         | 差分信号<br>Differential Signal   | 软 / 硬限位<br>Soft / Hard Limit             | 支持<br>Support                           |
| 驱动系统<br>Drive System           | 步进 / 伺服电机<br>Stepping / Servo Motor   | 最大脉冲频率<br>Maximum Pulse Frequency        | 10MHz                                   |
| 最小输入单位<br>Minimum Input Unit   | 0.001mm   | 密码保护<br>Password Protection              | 支持<br>Support                           |
| 语言种类<br>Language               | 简 / 繁体中文、英文、其他语言可定制<br>Simplified/Traditional Chinese, English, Other Languages Can Be Customized   |  |   |
| 标准配置<br>Standard Configuration | 手持控制器: 1 个, 19 针 HDMI 数据线: 1 条, 16 I/O 接口板: 1 块, 说明书: 1 本, 锐志激光专用软件<br>DSP Handle: 1, 19-pin HDMI Cable: 1, 16 I/O Interface Board: 1, Manual: 1, RichAuto Laser Software |  |   |

## A55 多刀头运动控制系统 Multi-spindle Motion Control System-A55

### 产品特点 Product Features

- ◆ 采用位置控制方式，差分控制信号，支持三轴联动控制
- ◆ 5 寸彩屏显示，完美仿真加工文件
- ◆ 标准配备 16 入 16 出接口板，选配 32 入 32 出接口板，I/O 口可自定义编辑
- ◆ 通过 T 指令实现刀头自动切换，支持多刀头同时加工
- ◆ 支持气缸多刀头控制模式
- ◆ 刀头数量可根据实际需求进行设置
- ◆ 刀头间距自动换算，保证多刀头共用一个工件坐标系
- ◆ 完善的 PC 机控制模式，一台 PC 机可以控制多台机器
- ◆ 抗干扰性强，通过多项 CE 测试
- ◆ 智能加工记忆功能，支持掉电恢复以及断点加工功能
- Adopting position control & differential signal mode, support three-axis linkage motion control
- 5 inches color display, perfect processing file simulation
- Standard 16 input&output ports interface board, 32 input&output ports interface board is optional, I/O ports can be customized to edit
- Automatically switch spindle by T code, support multi-spindle simultaneously processing
- Support multi-cylinder spindle control mode
- Spindle number can be set according to the actual needs
- Automatical calculating spaces of each spindle to ensure that each spindle work under the same workpiece coordinate system
- Support computer operating mode, one computer can control one or more machines, which will reduce the cost
- Defend interference more powerfully and pass a number of CE tests
- Intelligent processing memory function, owns more functions of power off restoration, continuation on break point, working time anticipation, etc



### 应用领域 Application Field



### 产品参数 Product Parameters

| 产品编号<br>Product Model          | RichAuto-A55   |  |   |
|--------------------------------|--|--|---|
| 处理器<br>CPU                     | DSP  | 掉电保护功能<br>Power failure protection       | 支持<br>Support                           |
| 内置存储器<br>Built-in Memory       | 1GB  | 断点加工功能<br>Breakpoint Processing Function | 无限<br>Unlimited                         |
| 显示屏<br>Display Screen          | 5 寸彩屏<br>5 "Color Screen   | 供电电压<br>Power Supply                     | 9-36V DC                                |
| 通讯端口<br>Communication Port     | U 盘、网络<br>U Disk, Network  | 运动模式<br>Motion Mode                      | 连续、点动、距离<br>Continuous, Point, Distance |
| 联动轴数<br>Number of Linkage Axes | 3 轴<br>3 Axes  | 插补方式<br>Interpolation Method             | 直线、圆弧、样条曲线<br>Line, Arc, Spline         |
| 控制信号<br>Control Signal         | 差分信号<br>Differential Signal  | 软 / 硬限位<br>Soft /Hard Limit              | 支持<br>Support                           |
| 驱动系统<br>Drive System           | 步进 / 伺服电机<br>Stepping/Servo Motor  | 最大脉冲频率<br>Maximum Pulse Frequency        | 10MHz                                   |
| 最小输入单位<br>Minimum Input Unit   | 0.001mm  | 密码保护<br>Password Protection              | 支持<br>Support                           |
| 语言种类<br>Language               | 简 / 繁体中文、英文、其他语言可定制<br>Simplified/Traditional Chinese, English, Other Languages Can Be Customized                                      |  |   |
| 标准配置<br>Standard Configuration | 手持控制器: 1 个, 19 针 HDMI 数据线: 1 条, 16 I/O 接口板: 1 块, 说明书: 1 本<br>DSP Handle: 1, 19-pin HDMI Cable: 1, 16 I/O Interface Board: 1, Manual: 1 |  |   |

## A57 直排平面换刀运动控制系统 ATC Motion Control System-A57

### 产品特点 Product Features

- ◆ 采用位置控制方式，差分控制信号，支持三轴联动控制
- ◆ 5 寸彩屏显示，完美仿真加工文件
- ◆ 完善的 PC 机控制模式，一台 PC 机可以控制多台机器
- ◆ 支持后排，侧排平面换刀
- ◆ 加工中换刀过程快速、准确、安全
- ◆ 识别 T 指令，支持更多地刀具数量
- ◆ 运行速度更快，加工效率更高
- ◆ 支持刀库盖、防尘罩等多种附加功能
- ◆ 标配 32 入 32 出接口板，I/O 口可自定义编辑
- ◆ 支持驱动器、变频器故障等多种报警信号
- Adopting position control & differential signal mode, support four-axis linkage motion control
- 5 inches color display, perfect processing file simulation
- Support computer operating mode, one computer can control one or more machines, which will reduce the cost
- Support back&side ATC
- Tool change process is fast, accurate and safe during processing
- Identify T code and support more tools
- Faster running speed and higher processing efficiency
- Support grip cover, dust guard and other additional functions
- Standard 32 input&output ports interface board, I/O ports can be customized to edit
- Support drive, inverter fault alarm, etc



### 应用领域 Application Field



### 产品参数 Product Parameters

| 产品型号<br>Product Model          | RichAuto-A57   |                                   |   |
|--------------------------------|--|-----------------------------------|---|
| 处理器<br>CPU                     | DSP  | 刀库盖<br>Grip Cover                 | 支持<br>Support                           |
| 内置存储器<br>Built-in Memory       | 1GB  | 防尘罩<br>Dust Guard                 | 支持<br>Support                           |
| 显示屏<br>Display Screen          | 5 寸彩屏<br>5 "Color Screen   | 供电电压<br>Power Supply              | 9-36V DC                                |
| 通讯端口<br>Communication Port     | U 盘、网络<br>U Disk, Network  | 运动模式<br>Motion Mode               | 连续、点动、距离<br>Continuous, Point, Distance |
| 联动轴数<br>Number of Linkage Axes | 3 轴<br>3 Axes  | 插补方式<br>Interpolation Way         | 直线、圆弧、样条曲线<br>Line, Arc, Spline         |
| 控制信号<br>Control Signal         | 差分信号<br>Differential Signal  | 软 / 硬限位<br>Soft /Hard Limit       | 支持<br>Support                           |
| 驱动系统<br>Drive System           | 步进 / 伺服电机<br>Stepping/Servo Motor  | 最大脉冲频率<br>Maximum Pulse Frequency | 10MHz                                   |
| 最小输入单位<br>Minimum Input Unit   | 0.001mm  | 密码保护<br>Password Protection       | 支持<br>Support                           |
| 语言种类<br>Language               | 简 / 繁体中文、英文、其他语言可定制<br>Simplified/Traditional Chinese, English, Other Languages Can Be Customized                                      |                                   |   |
| 标准配置<br>Standard Configuration | 手持控制器: 1 个, 19 针 HDMI 数据线: 1 条, 32 I/O 接口板: 1 块, 说明书: 1 本<br>DSP Handle: 1, 19-pin HDMI Cable: 1, 32 I/O Interface Board: 1, Manual: 1 |                                   |   |

圆盘换刀运动控制系统 ATC Disc Motion Control System-A523

三寸彩屏激光运动控制系统 Laser Motion Control System-A320

产品特点 Product Features

- ◆ 5 寸彩屏显示,完美仿真加工文件
- ◆ 手持式操作模式,简单、直观、快捷
- ◆ 支持 8 把刀具,刀库形式支持盘式 ATC 刀库
- ◆ 自动记忆盘式换刀器的 1 号刀具位置和偏移
- ◆ 可以设置盘式换刀的起始速度和换刀速度
- ◆ 自动监测刀库中是否存在刀具,避免空操作和碰撞
- ◆ 系统自动记忆刀具的位置和刀具长度,每次换刀只需重新测试刀具的长度
- ◆ 支持刀库盖、防尘罩等多种附加功能
- ◆ 标配 32 入 32 出接口板, I/O 口可自定义编辑
- ◆ 支持横向排钻和纵向排钻
- 5 inches color display, perfect processing file simulation
- Handheld operation mode, simple, intuitive and fast
- Support eight tools and disc magazine
- Automatically save the position and offset of 1st tool
- Users can set the starting speed and the speed of ATC
- Automatically monitoring tool magazine to prevent meaningless operations and avoiding collision
- Automatically remember the position of the tool and tool length, users only need to calculate the length of the new tool after changing tools
- Support grip cover, dust guard and other additional functions
- Standard 32 input&output ports interface board, I/O ports can be customized to edit
- Support horizontal drilling and vertical drilling



应用领域 Application Field



产品参数 Product Parameters

| 产品型号<br>Product Model          | RichAuto-A523  |                                   |   |
|--------------------------------|--|-----------------------------------|---|
| 处理器<br>CPU                     | DSP  | 刀库盖<br>Grip Cover                 | 支持<br>Support                           |
| 内置存储器<br>Built-in Memory       | 1GB  | 防尘罩<br>Dust Guard                 | 支持<br>Support                           |
| 显示屏<br>Display Screen          | 5 寸彩屏<br>5 "Color Screen   | 供电电压<br>Power Supply              | 9-36V DC                                |
| 通讯端口<br>Communication Port     | U 盘、网络<br>U Disk, Network  | 运动模式<br>Motion Mode               | 连续、点动、距离<br>Continuous, Point, Distance |
| 联动轴数<br>Number of Linkage Axes | 3 轴<br>3 Axes  | 插补方式<br>Interpolation Way         | 直线、圆弧、样条曲线<br>Line, Arc, Spline         |
| 控制信号<br>Control Signal         | 差分信号<br>Differential Signal  | 软 / 硬限位<br>Soft / Hard Limit      | 支持<br>Support                           |
| 驱动系统<br>Drive System           | 步进 / 伺服电机<br>Stepping/Servo Motor  | 最大脉冲频率<br>Maximum Pulse Frequency | 10MHz                                   |
| 最小输入单位<br>Minimum Input Unit   | 0.001mm  | 密码保护<br>Password Protection       | 支持<br>Support                           |
| 语言种类<br>Language               | 简 / 繁体中文、英文、其他语言可定制<br>Simplified/Traditional Chinese, English, Other Languages Can Be Customized                                      |                                   |   |
| 标准配置<br>Standard Configuration | 手持控制器: 1 个, 19 针 HDMI 数据线: 1 条, 32 I/O 接口板: 1 块, 说明书: 1 本<br>DSP Handle: 1, 19-pin HDMI Cable: 1, 32 I/O Interface Board: 1, Manual: 1 |                                   |   |

产品特点 Product Features

- ◆ 独立的激光控制软件及制图插件,兼容各种常用制图软件
- ◆ 面板操作,脱机完成加工操作
- ◆ 支持 AI、PLT、DXF 等图形图像数据格式
- ◆ 支持标准 G 代码文本数据格式
- ◆ 支持 BMP 位图直接加工,无需经过任何软件导出
- ◆ 支持自动吹气、自动对焦、脚踏开关、安全保护等功能
- ◆ 支持分层输出,对每层可以单独定义激光功率、加工速度、工作方式(雕刻、切割等),并对每层的定义参数自动保存
- ◆ 可以通过网络使用上位机传输、监视及控制文件加工
- ◆ 采用矢量与点阵混合工作模式,可以在同一版面上完成雕刻、切割工作
- ◆ 支持 0-5V 模拟量能量控制,高速 PWM 输出控制
- Independent laser control software and output plug-ins, compatible with all popular graphics software
- Panel operation mode, complete processing offline
- Support AI, PLT, DXF and other graphics or image data formats
- Support standard G code data format
- Load the BMP bitmap file directly, do not need to export other format from laser control software
- Support automatic inflatable, automatic focus, the foot switch, safe protection etc functions
- Support hierarchical output, individually define laser power, processing speed, working methods for each layer (engraving, cutting, etc.), and automatically save the definitions of each layer
- Use PC software to transfer, monitor, and control file to complete processing by network
- Adopting a mixed work mode which includes vector and lattice, users can complete the engraving, cutting on the same page
- Support 0-5V analog quantity output, support high-speed PWM digital quantity output

应用领域 Application Field



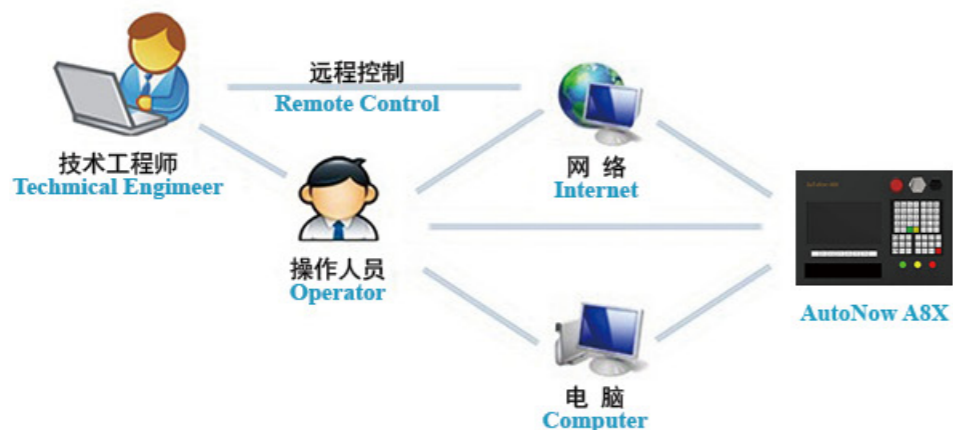
产品参数 Product Parameters

| 产品型号<br>Product Model          | RichAuto-A57  |                                   |   |
|--------------------------------|---|-----------------------------------|---|
| 处理器<br>CPU                     | DSP   | 刀库盖<br>Grip Cover                 | 支持<br>Support                           |
| 内置存储器<br>Built-in Memory       | 1GB   | 防尘罩<br>Dust Guard                 | 支持<br>Support                           |
| 显示屏<br>Display Screen          | 4.3 寸彩屏<br>4.3 "Color Screen  | 供电电压<br>Power Supply              | 直流 24V<br>DC 24V                        |
| 通讯端口<br>Communication Port     | U 盘、网络<br>U Disk, Network   | 运动模式<br>Motion Mode               | 连续、点动、距离<br>Continuous, Point, Distance |
| 联动轴数<br>Number of Linkage Axes | 3 轴<br>3 Axes   | 插补方式<br>Interpolation Way         | 直线、圆弧、样条曲线<br>Line, Arc, Spline         |
| 控制信号<br>Control Signal         | 差分信号<br>Differential Signal   | 软 / 硬限位<br>Soft / Hard Limit      | 支持<br>Support                           |
| 驱动系统<br>Drive System           | 步进 / 伺服电机<br>Stepping/Servo Motor   | 最大脉冲频率<br>Maximum Pulse Frequency | 10MHz                                   |
| 最小输入单位<br>Minimum Input Unit   | 0.001mm   | 密码保护<br>Password Protection       | 支持<br>Support                           |
| 语言种类<br>Language               | 简 / 繁体中文、英文、其他语言可定制<br>Simplified/Traditional Chinese, English, Other Languages Can Be Customized |                                   |   |
| 标准配置<br>Standard Configuration | 操作面板: 1 个, 16 I/O 接口板: 1 块, 说明书: 1 本<br>Panel: 1, 16 I/O Interface Board: 1, Manual: 1            |                                   |   |



- ◆ 8 寸彩色屏幕显示
- ◆ 最多支持 8 轴联动
- ◆ 支持 64 个输入, 64 个输出端口
- ◆ 支持用户自己编写 PLC 程序, 实现控制所有端口信号以及所有轴的运动
- ◆ 支持用户自定义软件操作界面, 根据不同的用途使用不同的操作界面
- ◆ 支持多种结构的机床, 如 A&C 结构、转台结构等
- ◆ 支持多个控制系统组网, 实现生产线上的协同作业
- ◆ 提供完整的 G 代码支持
- ◆ 更大的内部存储容量, 达到 1G 以上
- ◆ 超强的系统加密保护功能
- ◆ 更强的后续开发性
- ◆ 照片级别预览、跟踪加工路径功能
- ◆ 图形设计功能
- ◆ 恒速加工模式
- ◆ 远程操作、维护功能

- 8 inches color screen display
- Support up to 8-axis linkage
- Support 64 input and 64 output ports
- Users can write their own PLC programs to achieve control all ports and the movement of all axes
- Users can define their own software interface, use different user interface according to different purposes
- Suitable for machines of different structure, such as A & C structure, turntable structure
- Support for multiple network control systems to realize collaboration on the production line
- Provide complete G code
- Bigger internal storage capacity, over 1 G
- Powerful system encryption
- Stronger secondary development function
- Photo- preview, tracking processing path function
- Graphic design function
- Constant speed processing mode
- Remote operation and maintenance function



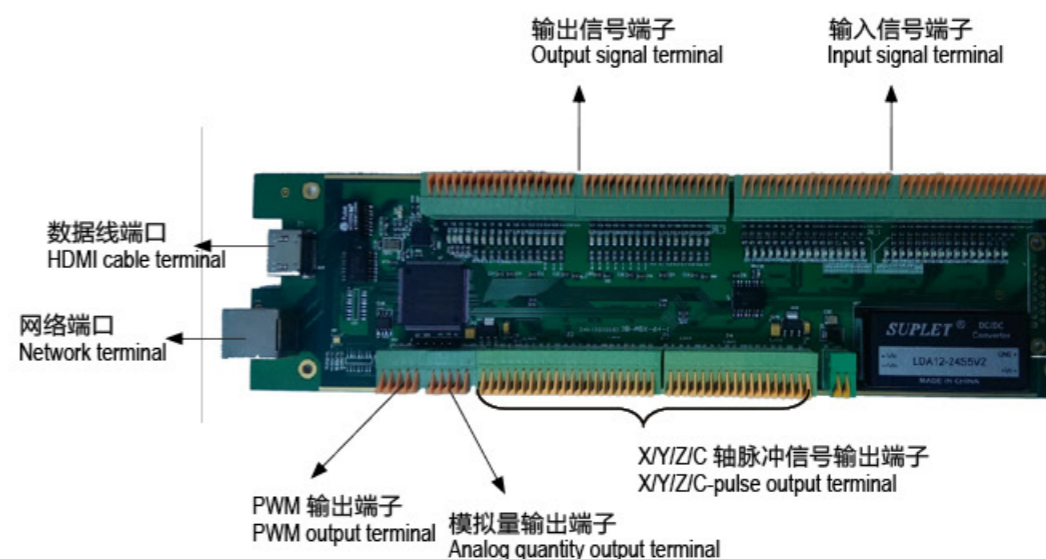
### 产品型号分类表 Product Category List

| 产品分类<br>Product Category   | 型号<br>Model |
|--|-------------|
| 高级圆盘换刀运动控制系统<br>Advanced Rotary-type Tool Change Motion Control System | A87         |
| 高级模具机运动控制系统<br>Advanced Precision Die Machine Motion Control System    | A813        |

### 产品参数 Product Parameters

| 产品型号<br>Product Model          | RichAuto-A8X   |  |   |
|--------------------------------|--|--|---|
| 处理器<br>CPU                     | DSP  | 掉电保护功能<br>Power Failure Protection       | 支持<br>Support                           |
| 内置存储器<br>Built-in Memory       | 1G   | 断点加工功能<br>Breakpoint Processing Function | 无限<br>Unlimited                         |
| 显示屏<br>Display Screen          | 8 寸彩屏<br>8" Color Screen   | 供电电压<br>Power Supply                     | 直流 24V<br>DC 24V                        |
| 通讯端口<br>Communication Port     | U 盘、USB 数据线、网络<br>U Disk, USB Cable, Network   | 运动模式<br>Motion Mode                      | 连续、点动、距离<br>Continuous, Point, Distance |
| 联动轴数<br>Number of Linkage Axes | 3 轴 / 4 轴 / 5 轴<br>3/4/5 Axes  | 插补方式<br>Interpolation Method             | 直线、圆弧、曲线<br>Line, Arc, Spline           |
| 控制信号<br>Control Signal         | 差分信号<br>Differential signal  | 软 / 硬限位<br>Soft/Hard Limit               | 支持<br>Support                           |
| 驱动系统<br>Drive System           | 步进 / 伺服电机<br>Stepping/Servo Motor  | 最大脉冲频率<br>Maximum Pulse Frequency        | 10M/S                                   |
| 最小输入单位<br>Minimum Input Unit   | 0.001mm  | 密码保护<br>Password Protection              | 支持<br>Support                           |
| 语言种类<br>Language               | 简 / 繁体中文、英文、其他语言可定制<br>Simplified/Traditional Chinese, English, Other Languages Can Be Customized  |  |   |
| 标准配置<br>Standard Configuration | A8X 一体机: 1 台; 32 入 32 出接口板: 1 块; 19 针数据线: 1 条; 说明书: 1 本<br>A8X All-in-one: 1, 32 I/O Interface Board: 1, 19-pin HDMI Cable: 1, Manual: 1 |  |   |

### A8X 接口板说明 Description Of Interface Board





高性能核心处理器

High-performance core processor

采用 8 核处理 CPU，运算速度更快，处理能力更强。  
8-core processing CPU, faster computing speed, stronger data processing capacity .

简单的手持式按键操作

Simple handheld key operation

16 个按键操作模式，易学易用，简单快捷。  
16-key operation mode , easy to use, simple and quick.

脱机操作，存储空间大

Off-line operation,large storage space

直接读取 U 盘、SD 卡等里面的加工文件进行加工，脱机操作，方便快捷；512Mb 内存，可以存储更多的加工文件。  
Users can directly start processing by choosing the files from U Flash Disk,SD card,etc.512Mb internal storage,users can copy more processing files to internal.

便携式移动存储模式

Portable storage mode

通过 USB 数据线连接手柄和电脑，可实现手柄的移动存储功能，电脑提示发现新的可移动存储设备后，即可以将加工文件直接复制到手柄内部。  
Connect handle and computer with a USB cable,which will make handle achieve removable storage functionality, users can copy processing files from computer to handle after prompting the discovery of new removable storage devices.

加工文件智能预读功能

Intelligent pre-reading processing files mode

智能化的预读加工文件方式，用户可以选择预读与否，预读过程中还可以根据实际需求跳过预读过程；一个文件预读完毕后，再次加工此文件不再重复预读，更大程度的节省了用户的宝贵时间。  
Intelligent pre-reading processing files mode, users can choose whether pre-reading or not,Users can also choose to skip the pre-reading process according to the actual needs during pre-reading process, After pre-reading , repeat the same file again, it will directly start processing,which saves the users valuable time a lot.

智能记忆功能

Intelligent memory function

支持掉电恢复以及断点加工功能，智能记忆加工文件名称以及文件存储位置，方便用户准确、快捷的恢复加工。  
Intelligent processing memory function,owns more functions of power off restoration,continuation on break point,working time anticipation, etc.

参数备份恢复功能

Parameter backup and restore function

具备参数备份以及参数恢复功能，参数和加工文件采用分区存储，有效防止重要参数丢失。  
Support parameters backup and restore function.Parameters and processing files are stored in different areas,which effectively prevent the loss of important parameters.



安全预检及报警提示

Safety pre-detection and alarm prompt

支持安全预警及系统异常提示功能，如回零异常轴标注、加工超范围显示等，最大限度的保证加工的准确性和一致性。

Support security warning and system abnormalities prompt function, such as labelling abnormal axis after backing home, displaying processing over-range, which ensures maximum accuracy and consistency of processing.

超强的系统加密保护功能

Powerful system encryption

A1X 系列产品具有更全面的加密保护功能，诸如硬件加密、参数设置加密、内部重要加工文件加密等，有效防止被修改、删除以及抄袭，最大限度的保证客户技术信息和资产安全。

This series of products have a more comprehensive encryption protection function, such as hardware encryption, parameter setting encryption and internal processing files encryption, which effectively prevent to be modified, deleted and copied, to ensure technical information and asset secure .

抗干扰性大大提高

Anti-interference performance is greatly improved

通过多项 CE 测试，强抗干扰性保证了数据传输的准确性。

Pass a number of CE tests; Strong anti-interference performance to ensure data transmission accurate.

可开发性更强

Stonger secondary development function

A1X 系列产品标准配备 8 入 8 出接口板，用户可以根据实际需求进行编辑和定义；高性能 8 核 CPU，方便为客户进行二次开发，如添加特殊功能，特殊操作方式，满足不同行业的需求，具有周期短、成本低、保密性好等特点。

Standard 8 input&output ports interface board, users can edit and define according to the actual needs; High-performance 8-core CPU ensures that secondary development for customers is convenient, such as adding special features, a special operation mode to meet the needs of different industries ,and it owns short cycle, low cost, confidentiality and other good features.

产品型号分类表 Product Category List

| 产品分类<br>Product Category                               | 型号<br>Model |
|--|-------------|
| 三轴运动控制系统<br>Three -axis Linkage Motion Control System  | A11         |
| 等离子切割运动控制系统<br>Plasma Cutting Motion Control System    | A12         |
| 普通车床运动控制系统<br>Normal Lathe Motion Control System       | A13         |
| 点胶机运动控制系统<br>Dispenser Motion Control System           | A14         |
| 多刀头运动控制系统<br>Multi-spindle Motion Control System       | A15         |
| 四轴四联动运动控制系统<br>Four-axis Linkage Motion Control System | A18         |
| 双刀头车床运动控制系统<br>Two-spindle Lathe Motion Control System | A19         |

## A11 三轴运动控制系统 Three-axis Linkage Motion Control System-A11

### 产品特点 Product Features

- ◆ 采用位置控制方式，支持三轴联动控制，支持双 Y 驱动
- ◆ 存储空间大、U 盘兼容性强，文件读取速度快
- ◆ 智能化的文件检查功能，加工安全可靠
- ◆ 支持手柄便携式移动存储模式
- ◆ 抗干扰性强，通过多项 CE 测试
- ◆ 智能加工记忆功能，支持掉电恢复以及断点加工功能
- ◆ 完善的加密功能
- ◆ I/O 端口可编辑，给用户广泛开发平台



- Adopting position control mode, support three-axis linkage motion control, double Y drive
- Large storage space, perfect U flash disk compatibility, fast reading speed
- Intelligent pre-reading processing files mode, processing is safe and reliable
- Portable storage mode
- Anti-interference performance is greatly improved, pass a number of CE tests
- Intelligent memory function, support power failure protection and breakpoint processing function
- Powerful system encryption
- Definable I/O ports, stonger secondary development function

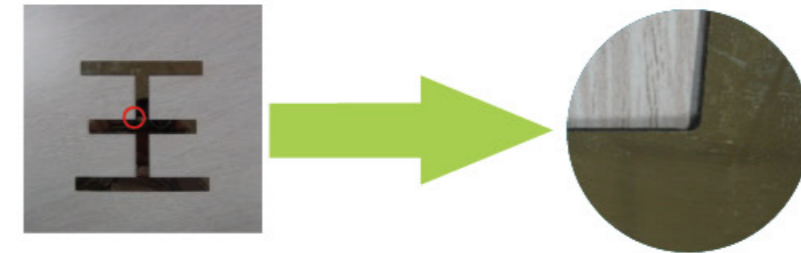
### 产品参数 Product Parameters

| 产品编号<br>Product Model          | RichAuto—A11   |  |   |
|--------------------------------|--|--|---|
| 处理器<br>CPU                     | DSP  | 掉电保护功能<br>Power Failure Protection       | 支持<br>Support                           |
| 内置存储器<br>Built-in Memory       | 512MB  | 断点加工功能<br>Breakpoint Processing Function | Support 8 breakpoints                   |
| 显示屏<br>Display Screen          | 128*64 单色液晶屏<br>128*64 Monochrome Screen   | 供电电压<br>Power Supply                     | 直流 24V<br>DC 24V                        |
| 通讯端口<br>Communication Port     | U 盘<br>U Disk  | 手动模式<br>Manual Mode                      | 连续、点动、距离<br>Continuous, Point, Distance |
| 联动轴数<br>Number of Linkage Axes | 3 轴<br>3 Axes  | 插补方式<br>Interpolation Method             | 直线、圆弧、样条曲线<br>Line, Arc, Spline         |
| 控制信号<br>Control Signal         | 共阳控制<br>Common Anode   | 软 / 硬限位<br>Soft / Hard Limit             | 支持<br>Support                           |
| 驱动系统<br>Drive System           | 步进 / 伺服电机<br>Stepping/Servo Motor  | 最大脉冲频率<br>Maximum Pulse Frequency        | 1M Hz                                   |
| 最小输入单位<br>Minimum Input Unit   | 0.001mm  | 密码保护<br>Password Protection              | 支持<br>Support                           |
| 语言种类<br>Language               | 简 / 繁体中文、英文、其他语言可定制<br>Simplified/Traditional Chinese, English, Other Languages Can Be Customized                            |  |   |
| 标准配置<br>Standard Configuration | 手柄控制器: 1 个; 50 针数据线: 1 条; 8 入 8 出接线板: 1 块; 数据光盘: 1 张<br>DSP Handle: 1, 50-pin Cable: 1, 8 I/O Interface Board: 1, Data CD: 1 |  |   |

## A12 等离子切割运动控制系统 Plasma Cutting Motion Control System-A12

### 产品特点 Product Features

- ◆ 采用位置控制方式，支持三轴联动控制，支持双 Y 驱动
- ◆ 全新运算处理模式，有效防止切割拐角烧角问题
- ◆ 存储空间大、U 盘兼容性强
- ◆ 支持手柄便携式移动存储模式
- ◆ 抗干扰性强，通过多项 CE 测试，加工安全可靠
- ◆ 智能加工记忆功能，支持掉电恢复以及断点加工功能
- ◆ 完善的加工边框测试功能，摆放工料更方便
- ◆ I/O 端口可编辑，用来控制气缸、弧压调高器外部设备
- Adopting position control mode, support three-axis linkage motion control, double Y drive
- The new arithmetic mode which effectively prevent burning off the corner
- Large storage space, perfect U flash disk compatibility
- Portable storage mode
- Anti-interference performance is greatly improved, pass a number of CE tests, processing is safe and reliable
- Intelligent memory function, support power failure protection and breakpoint processing function
- Perfect Borders test function which make putting workpieces more convenient
- Definable I/O ports to control cylinder and plasma torch height controller, etc



### 产品参数 Product Parameters

| 产品编号<br>Product Model          | RichAuto—A12   |  |   |
|--------------------------------|--|--|---|
| 处理器<br>CPU                     | DSP  | 引弧延迟<br>Arc Delay                      | 支持<br>Support                           |
| 内置存储器<br>Built-in Memory       | 512MB  | 弧压调高<br>Plasma Torch Height Controller | 支持<br>Support                           |
| 显示屏<br>Display Screen          | 128*64 单色液晶屏<br>128*64 Monochrome Screen   | 供电电压<br>Power Supply                   | 直流 24V<br>DC 24V                        |
| 通讯端口<br>Communication Port     | U 盘<br>U Disk  | 手动模式<br>Manual Mode                    | 连续、点动、距离<br>Continuous, Point, Distance |
| 联动轴数<br>Number of Linkage Axes | 3 轴 / 2 轴<br>3 Axes / 2 Axes   | 插补方式<br>Interpolation Method           | 直线、圆弧、样条曲线<br>Line, Arc, Spline         |
| 控制信号<br>Control Signal         | 共阳控制<br>Common Anode   | 软 / 硬限位<br>Soft / Hard Limit           | 支持<br>Support                           |
| 驱动系统<br>Drive System           | 步进 / 伺服电机<br>Stepping/Servo Motor  | 最大脉冲频率<br>Maximum Pulse Frequency      | 1M Hz                                   |
| 最小输入单位<br>Minimum Input Unit   | 0.001mm  | 密码保护<br>Password Protection            | 支持<br>Support                           |
| 语言种类<br>Language               | 简 / 繁体中文、英文、其他语言可定制<br>Simplified/Traditional Chinese, English, Other Languages Can Be Customized                            |  |   |
| 标准配置<br>Standard Configuration | 手柄控制器: 1 个; 50 针数据线: 1 条; 8 入 8 出接线板: 1 块; 数据光盘: 1 张<br>DSP Handle: 1, 50-pin Cable: 1, 8 I/O Interface Board: 1, Data CD: 1 |  |   |

## A15 多刀头运动控制系统 Multi-spindle Motion Control System-A15

### 产品特点 Product Features



- ◆ 采用位置控制方式，支持三轴联动控制，支持双 Y 驱动
- ◆ 存储空间大、U 盘兼容性强，文件读取速度快
- ◆ 通过 T 指令实现刀头自动切换，支持多刀头同时加工
- ◆ 刀头数量可根据实际需求进行设置
- ◆ 刀头间距自动换算，保证多刀头共用一个工件坐标系
- ◆ 智能化的文件检查功能，加工安全可靠
- ◆ 支持手柄便携式移动存储模式
- ◆ 抗干扰性强，通过多项 CE 测试
- ◆ 智能加工记忆功能，支持掉电恢复以及断点加工功能
- ◆ 完善的加密功能，安装、调试简单快捷

- Adopting position control mode, support three-axis linkage motion control, double Y drive
- Large storage space, perfect U flash disk compatibility, fast reading speed
- Support multi-cylinder spindle control mode
- Spindle number can be set according to the actual needs
- Automatically calculating spaces of each spindle to ensure that each spindle work under the same workpiece coordinate system
- Intelligent pre-reading processing files mode, processing is safe and reliable
- Portable storage mode
- Anti-interference performance is greatly improved, pass a number of CE tests
- Intelligent memory function, support power failure protection and breakpoint processing function
- Powerful system encryption. Installation and commissioning are simple and quick

### 产品参数 Product Parameters

| 产品编号<br>Product Model          | RichAuto-A15  |  |   |
|--------------------------------|---|--|---|
| 处理器<br>CPU                     | DSP   | 掉电保护功能<br>Power Failure Protection       | 支持<br>Support                           |
| 内置存储器<br>Built-in Memory       | 512MB   | 断点加工功能<br>Breakpoint Processing Function | Support 8 breakpoints                   |
| 显示屏<br>Display Screen          | 128*64 单色液晶屏<br>128*64 Monochrome Screen  | 供电电压<br>Power Supply                     | 直流 24V<br>DC 24V                        |
| 通讯端口<br>Communication Port     | U 盘、USB 数据线<br>U Disk、USB Cable   | 手动模式<br>Manual Mode                      | 连续、点动、距离<br>Continuous, Point, Distance |
| 联动轴数<br>Number of Linkage Axes | 3 轴<br>3 Axes   | 插补方式<br>Interpolation Method             | 直线、圆弧、样条曲线<br>Line, Arc, Spline         |
| 控制信号<br>Control Signal         | 共阳控制<br>Common Anode  | 软 / 硬限位<br>Soft / Hard Limit             | 支持<br>Support                           |
| 驱动系统<br>Drive System           | 步进 / 伺服电机<br>Stepping/Servo Motor   | 最大脉冲频率<br>Maximum Pulse Frequency        | 1M Hz                                   |
| 最小输入单位<br>Minimum Input Unit   | 0.001mm   | 密码保护<br>Password Protection              | 支持<br>Support                           |
| 语言种类<br>Language               | 简 / 繁体中文、英文、其他语言可定制<br>Simplified/Traditional Chinese, English, Other Languages Can Be Customized   |  |   |
| 标准配置<br>Standard Configuration | 手柄控制器: 1 个; 50 针数据线: 1 条; usb 数据线: 1 条; 8 入 8 出接线板: 1 块; 数据光盘: 1 张。<br>DSP Handle: 1, 50-pin Cable: 1, 8 I/O Interface Board: 1, Data CD: 1 |  |   |

## A18 四轴四联动运动控制系统 Four-axis Linkage Motion Control System-A18

### 产品特点 Product Features



- ◆ 采用位置控制方式，支持四轴联动控制
- ◆ 支持 A/C 旋转代码格式以及特殊 M 代码控制
- ◆ 存储空间大、U 盘兼容性强，文件读取速度快
- ◆ 智能化的文件检查功能，加工安全可靠
- ◆ 支持手柄便携式移动存储模式
- ◆ 抗干扰性强，通过多项 CE 测试
- ◆ 智能加工记忆功能，支持掉电恢复以及断点加工功能
- ◆ 完善的加密功能
- ◆ 可实现圆柱、棱柱、多面体等复杂工件加工
- ◆ 广泛应用在佛像、楼梯柱、欧式家具、桌腿等加工设备控制上

- Adopting position control mode, support four-axis linkage motion control
- Support A/C rotating code format and special M code control
- Large storage space, perfect U flash disk compatibility, fast reading speed
- Intelligent pre-reading processing files mode, processing is safe and reliable
- Portable storage mode
- Anti-interference performance is greatly improved, pass a number of CE tests
- Intelligent memory function, support power failure protection and breakpoint processing function
- Powerful system encryption
- Cylindrical, prismatic, polyhedral and other complex workpieces can be processed
- Widely used in the control of the Buddha, stair column, European furniture, table legs and other processing equipments

### 产品参数 Product Parameters

| 产品编号<br>Product Model          | RichAuto-A18  |  |   |
|--------------------------------|---|--|---|
| 处理器<br>CPU                     | DSP   | 掉电保护功能<br>Power Failure Protection       | 支持<br>Support                           |
| 内置存储器<br>Built-in Memory       | 512MB   | 断点加工功能<br>Breakpoint Processing Function | Support 8 breakpoints                   |
| 显示屏<br>Display Screen          | 128*64 单色液晶屏<br>128*64 Monochrome Screen  | 供电电压<br>Power Supply                     | 直流 24V<br>DC 24V                        |
| 通讯端口<br>Communication Port     | U 盘、USB 数据线<br>U Disk、USB Cable   | 手动模式<br>Manual Mode                      | 连续、点动、距离<br>Continuous, Point, Distance |
| 联动轴数<br>Number of Linkage Axes | 4 轴<br>4 Axes   | 插补方式<br>Interpolation Method             | 直线、圆弧、样条曲线<br>Line, Arc, Spline         |
| 控制信号<br>Control Signal         | 共阳控制<br>Common Anode  | 软 / 硬限位<br>Soft / Hard Limit             | 支持<br>Support                           |
| 驱动系统<br>Drive System           | 步进 / 伺服电机<br>Stepping/Servo Motor   | 最大脉冲频率<br>Maximum Pulse Frequency        | 1M Hz                                   |
| 最小输入单位<br>Minimum Input Unit   | 0.001mm   | 密码保护<br>Password Protection              | 支持<br>Support                           |
| 语言种类<br>Language               | 简 / 繁体中文、英文、其他语言可定制<br>Simplified/Traditional Chinese, English, Other Languages Can Be Customized   |  |   |
| 标准配置<br>Standard Configuration | 手柄控制器: 1 个; 50 针数据线: 1 条; usb 数据线: 1 条; 8 入 8 出接线板: 1 块; 数据光盘: 1 张。<br>DSP Handle: 1, 50-pin Cable: 1, 8 I/O Interface Board: 1, Data CD: 1 |  |   |

A19 双刀头车床运动控制系统 Two-spindle Lathe Motion Control System -A19

产品特点 Product Features

- ◆ 采用位置控制方式, 支持三轴联动控制
- ◆ 支持车铣一体机床
- ◆ 支持自动上料数控车床
- ◆ 支持 DXF、PLT、G 代码等多种格式文件
- ◆ 支持手柄便携式移动存储模式
- ◆ 抗干扰性强, 通过多项 CE 测试
- ◆ 完善的加密功能, 安装、调试简单快捷
- ◆ I/O 端口可编辑, 给用户广泛开发平台

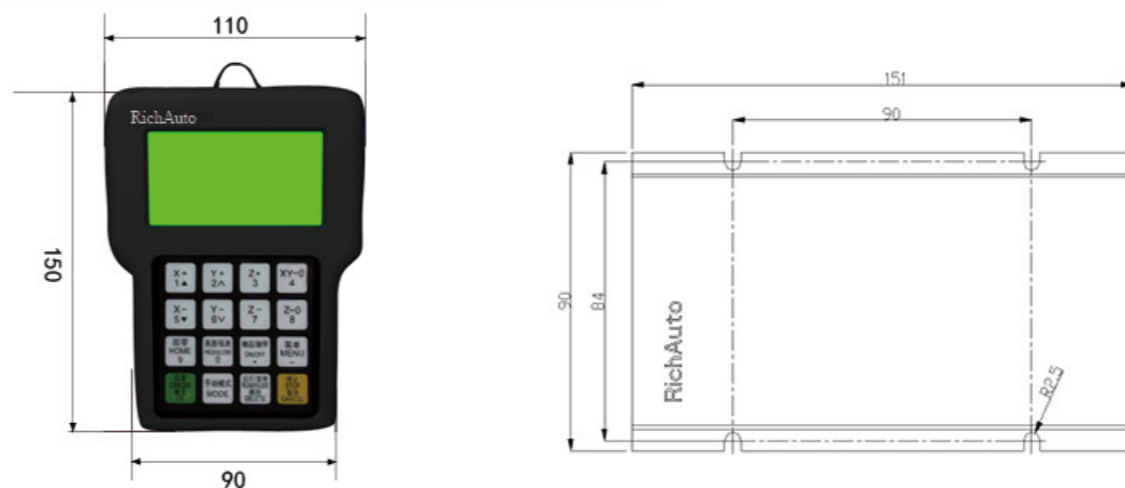


- Adopting position control mode, support three-axis linkage motion control
- Support Lathe & milling machine
- Support automatic feeding machine
- Support DXF, PLT, G code, and other file formats
- Portable storage mode
- Anti-interference performance is greatly improved, pass a number of CE tests
- Powerful system encryption. Installation and commissioning are simple and quick
- Definable I/O ports, stonger secondary development function

产品参数 Product Parameters

| 产品编号<br>Product Model          | RichAuto-A19  |  |   |
|--------------------------------|---|--|---|
| 处理器<br>CPU                     | DSP   | 掉电保护功能<br>Power Failure Protection       | 支持<br>Support                           |
| 内置存储器<br>Built-in Memory       | 512MB   | 断点加工功能<br>Breakpoint Processing Function | Support 8 breakpoints                   |
| 显示屏<br>Display Screen          | 128*64 单色液晶屏<br>128*64 Monochrome Screen  | 供电电压<br>Power Supply                     | 直流 24V<br>DC 24V                        |
| 通讯端口<br>Communication Port     | U 盘、USB 数据线<br>U Disk、USB Cable   | 手动模式<br>Manual Mode                      | 连续、点动、距离<br>Continuous, Point, Distance |
| 联动轴数<br>Number of Linkage Axes | 3 轴<br>3 Axes   | 插补方式<br>Interpolation Method             | 直线、圆弧、样条曲线<br>Line, Arc, Spline         |
| 控制信号<br>Control Signal         | 共阳控制<br>Common Anode  | 软 / 硬限位<br>Soft / Hard Limit             | 支持<br>Support                           |
| 驱动系统<br>Drive System           | 步进 / 伺服电机<br>Stepping/Servo Motor   | 最大脉冲频率<br>Maximum Pulse Frequency        | 1M Hz                                   |
| 最小输入单位<br>Minimum Input Unit   | 0.001mm   | 密码保护<br>Password Protection              | 支持<br>Support                           |
| 语言种类<br>Language               | 简 / 繁体中文、英文、其他语言可定制<br>Simplified/Traditional Chinese, English, Other Languages Can Be Customized   |  |   |
| 标准配置<br>Standard Configuration | 手柄控制器: 1 个; 50 针数据线: 1 条; usb 数据线: 1 条; 8 入 8 出接线板: 1 块; 数据光盘: 1 张。<br>DSP Handle: 1, 50-pin Cable: 1, 8 I/O Interface Board: 1, Data CD: 1 |  |   |

AutoNow——A1X



AutoNow——A5X



AutoNow——A8X

